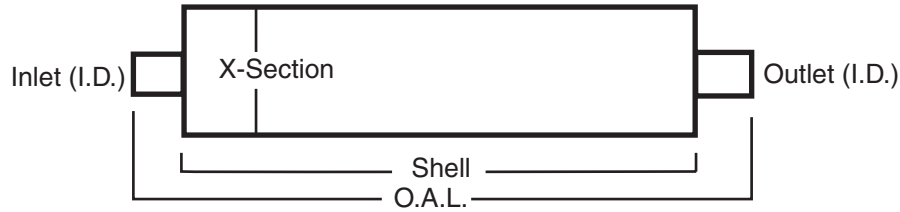


TABLE 3 — TRUCK MUFFLER SPECIFICATIONS

Arc Welded & Heavy Duty Mufflers, 2" & Larger Inlet Diameters

STYLE 1 — CENTER TO CENTER



Inlet I.D.	Part No.	Cross Section	Shell Length	Overall Length	Outlet I.D.	Inlet I.D.	Part No.	Cross Section	Shell Length	Overall Length	Outlet I.D.
2†	22766	6 ¹ / ₈	15	20 ¹ / ₄	2†	4	22572	9	20	27	4
2 ¹ / ₂ ‡	22765	6 ¹ / ₈	14 ¹ / ₄	18 ¹ / ₄	2 ¹ / ₂ ‡	4	22571	9	28	34 ¹ / ₂	4
2 ¹ / ₂	22635	6	20	26	2 ¹ / ₂	4	22936	9	44	51	4
2 ¹ / ₂	22356	6	30	38	2 ¹ / ₂	4	22970★	9	44	51	5
2 ¹ / ₂ OD	22577	8 ¹ / ₂	22	28	2 ¹ / ₄	4	22941	9	44 ¹ / ₂	51	5
2 ¹ / ₂	21163	6	24	30	2 ¹ / ₂	4	22969★	10	44	51	4
2 ³ / ₄	22355	6	24	37	2 ³ / ₄	4	22952	10	44	51 ⁷ / ₁₆	5
2 ³ / ₄	21925	6	26 ¹ / ₂	39 ¹ / ₂	2 ¹ / ₂	4	22916	10	45	51 ¹ / ₂	4
3‡	22630	7	14	19 ³ / ₄	3‡	4	21164	7	32 ¹ / ₂	39	4
3	21468	6	21	30	3	4	22962	10	44	51	5
3	21138	6	26	36 ¹ / ₂	3	4	21464	7	12	20	4
3	21146	7	12	20	3	4	21171	8	20	25 ³ / ₄	4
3	22389	7	30	38	3	4	21172	9	15	22	4
3	22996	11	36	46	4 WS	4	22965★	9	44	51	4
3 ³ / ₁₆	22715	10 ¹ / ₈	23 ¹ / ₂	28 ¹ / ₂	3 ³ / ₁₆	4	22966★	10	44	51	5
3 ¹ / ₂ ‡	22764	7 ¹ / ₈	15	19 ³ / ₄	3 ¹ / ₂ ‡	5	22771	9	19	26	5
3 ¹ / ₂	21470	7	30	38	3 ¹ / ₂	5	22914	9	33 ¹ / ₂	40	5
3 ¹ / ₂	22844	9	45	51	3 ¹ / ₂	5	22940	9	44 ¹ / ₂	51	5
3 ¹ / ₂	21088	11	22 ³ / ₄	28 ³ / ₄	3 ¹ / ₂	5	22920	10	44	51	5
3 ¹ / ₂	21467	7	12	20	3 ¹ / ₂	5	22924	10	44	51	5
3 ¹ / ₂	21173	9	25	31	3 ¹ / ₂	5	22938	10	60	66 ¹ / ₂	5
3 ¹ / ₂	21101	7	26 ¹ / ₄	32 ¹ / ₂	3	5	21835	9	12	20	5
4	21471	7	27 ¹ / ₄	36	4	5	22963★	10	44	51	5
4	22810	7	40	48	4	5	22964★	9	44	51	5
4‡	22631	9	20	26	4‡	5	22980#	10	44	51	5
4	21838	8 ³ / ₈	33 ¹ / ₂	40	4	5	22981#	10	44	51	5

† Double-Wrapped.
‡ Threaded.
@ Stainless.

★ Mega Flow Muffler.
Noise Braker Muffler.
SP Spout.

WS Welded Spout.

INFORMATION & BUILD TO ORDER

TOOLS AND ACCESSORIES

SCHOOL BUS

MEDIUM DUTY TRUCK GVV 3-6

HEAVY DUTY TRUCK GVV 7-8

APPLICATION BY ENGINE

NOISE AND BACKPRESSURE DATA

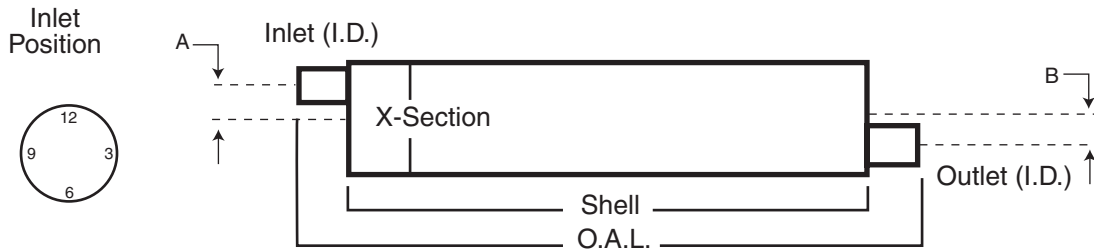
TRACTOR

MUFFLER SPECS

O.E. CROSS INDEX

TABLE 3 — TRUCK MUFFLER SPECIFICATIONS (Cont.)

STYLE 2 — OFFSET TO OFFSET



To locate the outlet connection:
View muffler from inlet end with inlet connection near 12 o'clock. Outlet will be located clockwise from inlet per chart.

Inlet ID	Part No.	Cross Section	Shell Length	Overall Length	Outlet ID	"A" Inlet Offset	"B" Outlet Offset	Inlet Position	Outlet Position
1 ⁷ / ₈	21849	6	10 ¹ / ₄	14 ³ / ₈	1 ³ / ₄	1 ¹ / ₂	1 ¹ / ₂	12	8
2	21169	6	22 ¹ / ₂	29	2	1 ³ / ₈	1 ³ / ₈	12	6
2 ¹ / ₄	22382	6	24	30	2 ¹ / ₄	1 ³ / ₈	1 ³ / ₈	12	6
2 ¹ / ₄	22581	6	19	26	2	1 ³ / ₈	1 ³ / ₈	12	6
2 ¹ / ₄	22582	6	25	31	2	1 ³ / ₈	1 ³ / ₈	12	6
2 ¹ / ₄	22177	7	27	37	2 ¹ / ₂	2 ³ / ₈	2 ³ / ₈	12	8
2 ¹ / ₄	22467	7 ¹ / ₈	22	26	2 ¹ / ₄	1 ³ / ₄	1 ³ / ₄	12	8
2 ¹ / ₂	22730	4 ¹ / ₈ x 9	19	26	2 OD	2 ⁷ / ₈	2 ⁷ / ₈	12	6
2 ¹ / ₂	22731	4 ¹ / ₈ x 9	19	26	2 ¹ / ₄ OD	2 ⁷ / ₈	2 ⁷ / ₈	12	6
2 ¹ / ₂	21151	6 ¹ / ₂	23	27 ³ / ₄	2 ¹ / ₄	1 ¹ / ₂	1 ¹ / ₂	12	6
2 ¹ / ₂	22583	6 ¹ / ₂	26	33	2 ¹ / ₄	1 ¹ / ₂	1 ¹ / ₂	12	6
2 ¹ / ₂	22628	6 ¹ / ₂	20	26	2 ¹ / ₂	1 ¹ / ₂	1 ¹ / ₂	12	6
2 ¹ / ₂	22003	8 ³ / ₈	26 ¹ / ₂	32 ¹ / ₂	2 ¹ / ₂	2 ¹ / ₂	2 ¹ / ₂	12	6
2 ¹ / ₂	21475	6 ¹ / ₂	26	35	2 ¹ / ₂	1 ¹ / ₂	1 ¹ / ₂	12	6
2 ³ / ₄	21152	7	29 ³ / ₄	36 ¹ / ₄	2 ¹ / ₄	1 ⁵ / ₈	1 ⁵ / ₈	12	6
2 ³ / ₄	22852	7	33 ¹ / ₂	40	2 ³ / ₄	1 ⁵ / ₈	1 ⁵ / ₈	12	6
2 ³ / ₄	22878	7	35	44	2 ³ / ₄	1 ⁵ / ₈	1 ⁵ / ₈	12	6
2 ³ / ₄	22101	7	34	41 ¹ / ₂	2 ¹ / ₂	1 ¹ / ₂	1 ³ / ₄	12	8
3	22636	8 ³ / ₈	21	27	3	2	2	12	6
3	21476	8 ³ / ₈	29 ³ / ₄	36 ¹ / ₄	3	2	2	12	6
3	21150	8 ¹ / ₄ x 11 ¹ / ₂	17	23	3 OD	3 ¹¹ / ₃₂	2 ⁵ / ₃₂	12	6
3 ¹ / ₄	21466	7	25 ¹ / ₂	32	2 ¹ / ₂	1 ⁷ / ₁₆	1 ³ / ₁₆	12	6
3 ¹ / ₂	22808	8 ³ / ₈	36 ¹ / ₂	43	3	1 ³ / ₄	2	12	6
3 ¹ / ₂	22632	8 ¹ / ₄ x 11 ¹ / ₂	26	32	3 ¹ / ₂	2 ³ / ₄	2 ¹ / ₂	12	6
3 ¹ / ₂	21832	8 ¹ / ₄ x 11 ¹ / ₂	26	32	4	2 ³ / ₄	2 ¹ / ₂	12	6
3 ¹ / ₂	22551	8 ¹ / ₄ x 11 ¹ / ₂	30	36	4	2 ³ / ₄	2 ¹ / ₂	12	6
4	22004	8 ¹ / ₄ x 11 ¹ / ₂	27	33	4	2 ¹ / ₂	2 ¹ / ₂	12	6
4	22449	8 ¹ / ₄ x 11 ¹ / ₂	31 ¹ / ₂	37 ¹ / ₂	4	2 ¹ / ₂	2 ¹ / ₂	12	6
4	21174	10 x 15	26	32 ¹ / ₂	4	4 ⁷ / ₁₆	4 ⁷ / ₁₆	12	6
4	22802	11	36	44	4	2 ¹ / ₂	2 ¹ / ₂	12	6
4	22995	11	36	42	4	2 ¹ / ₂	2 ¹ / ₂	12	6
4	22789	11 ¹ / ₈	30	36	4	2 ¹ / ₂	2 ¹ / ₂	12	6
4	22888	11 ¹ / ₈	36	42	4	2 ¹ / ₂	2 ¹ / ₂	12	6
4	22899	11 ¹ / ₈	36	42	4	2 ¹ / ₂	2 ¹ / ₂	12	6
4	21153	8 ¹ / ₄ x 11 ¹ / ₂	22	28	3 ¹ / ₂	3	3	12	6
4	21154	8 ¹ / ₄ x 11 ¹ / ₂	27	32	3 ¹ / ₂	2 ¹ / ₂	2 ¹ / ₂	12	6
4	22960	9	44	51	4	1 ¹⁵ / ₁₆	1 ¹⁵ / ₁₆	12	6
4	21833	10	30	36	4	2 ⁷ / ₁₆	2 ⁷ / ₁₆	12	6
4 OD	22812	11	36	49	4 WS	2 ¹ / ₂	2 ¹ / ₂	12	6
5	22552	10 x 15	26	32 ¹ / ₂	5	3 ¹ / ₈	3 ⁷ / ₃₂	12	6
5	22833	10 x 15	36	42	5	3 ³ / ₄	3 ³ / ₄	12	6
5	22951	10 x 15	44	50	5	3 ¹⁹ / ₃₂	3 ¹⁹ / ₃₂	12	6
6	22907	10 x 15	32	42 ¹ / ₂	6	3 ⁵ / ₈	3 ⁵ / ₈	12	6

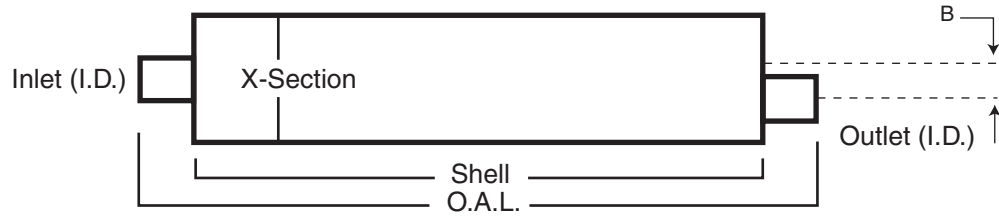
† Double-Wrapped.
‡ Threaded.
@ Stainless.

★ Mega Flow Muffler.
Noise Braker Muffler.
SP Spout.

WS Welded Spout.

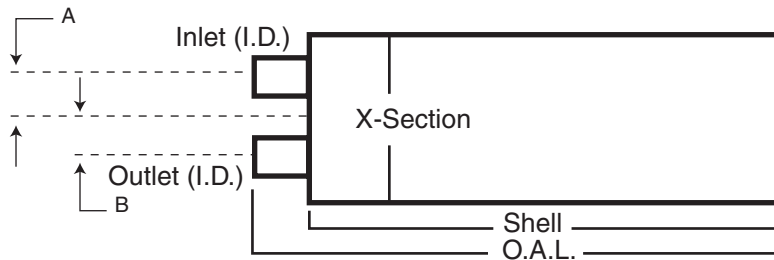
TABLE 3 — TRUCK MUFFLER SPECIFICATIONS (Cont.)

STYLE 3 — CENTER TO OFFSET



Inlet ID	Part No.	Cross Section	Shell Length	Overall Length	Outlet ID	Inlet Offset	"B" Outlet Offset
4	22827	8 ³ / ₈	33	41	4	—	1 ¹³ / ₁₆
4	22835†	10 ¹ / ₂	44 ¹ / ₂	51	4	—	2 ⁷ / ₁₆
4	22811	11	36	47	4 WS	—	2 ¹ / ₂
4	22813	11	36	48	4 WS	—	2 ¹ / ₂

STYLE 4 — INLET/OUTLET SAME END



Inlet ID	Part No.	Cross Section	Shell Length	Overall Length	Outlet ID	"A" Inlet Offset	"B" Outlet Offset
3	22637	8 ³ / ₈	22	23 ¹ / ₂	3	2	2
4	21137	10	27 ³ / ₄	32	4	2 ⁷ / ₁₆	2 ⁷ / ₁₆
4	21837	10	27	30 ¹ / ₂	4	2 ⁷ / ₁₆	2 ⁷ / ₁₆
4	21923	10 x 15	26	29 ¹ / ₄	4	3 ³ / ₄	3 ³ / ₄
4	21175	10 x 15	36	39 ¹ / ₂	4	1 ¹ / ₄	4 ¹ / ₂
4	22994	11	36	38	4	—	12
4	22814	12 x 15	30	35	5	1 ¹ / ₂	4 ¹ / ₂
5	22381	10 x 15	25	29	5	3	3
5	22971	10 x 15	44	47	5	3 ⁹ / ₁₆	3 ⁹ / ₁₆

† Double-Wrapped.
‡ Threaded.
@ Stainless.

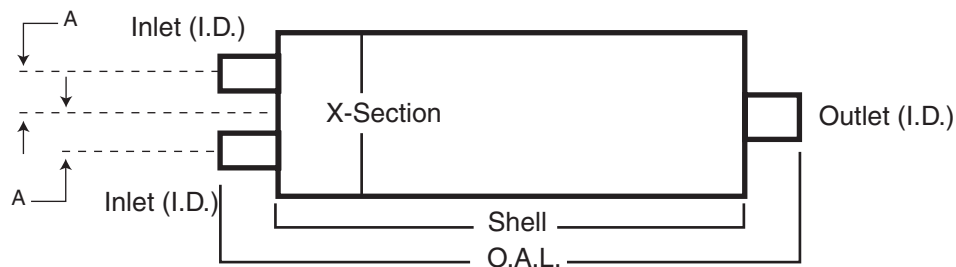
★ Mega Flow Muffler.
Noise Braker Muffler.
SP Spout.

WS Welded Spout.

INFORMATION & BUILD TO ORDER
TOOLS AND ACCESSORIES
SCHOOL BUS
MEDIUM DUTY TRUCK GVV 3-6
HEAVY DUTY TRUCK GVV 7-8
APPLICATION BY ENGINE
NOISE AND BACKPRESSURE DATA
TRACTOR
MUFFLER SPECS
O.E. CROSS INDEX

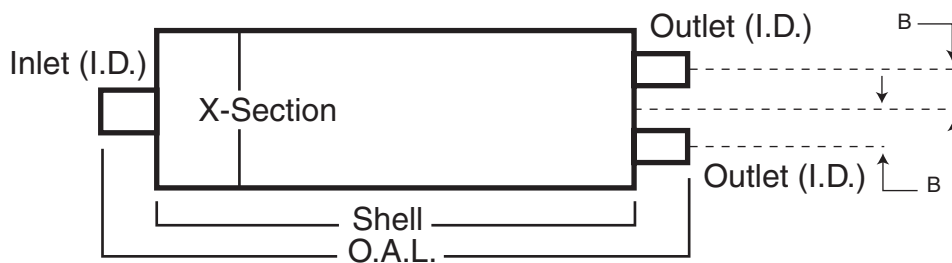
TABLE 3 — TRUCK MUFFLER SPECIFICATIONS (Cont.)

STYLE 5 — DUAL INLET TO SINGLE OUTLET



Inlet ID	Part No.	Cross Section	Shell Length	Overall Length	Outlet ID	"A" Inlet Offset	"A" Inlet Offset
2 ¹ / ₂ -2 ¹ / ₂	21260	7	28	34 ¹ / ₂	2 ¹ / ₂	1 ⁷ / ₈ -1 ⁷ / ₈	1 ⁷ / ₈
2 ¹ / ₂ -2 ¹ / ₂	22866	8 ³ / ₈	29 ¹ / ₂	38	2 ³ / ₄	1 ³ / ₄ -1 ³ / ₄	2
2 ¹ / ₂ -2 ¹ / ₂	22865	8 ³ / ₈	29 ³ / ₄	36 ¹ / ₄	3 OD	1 ⁵ / ₈ -1 ⁵ / ₈	2
2 ¹ / ₂ -2 ¹ / ₂	22822	8 ³ / ₈	35 ¹ / ₂	43	3	1 ⁵ / ₈ -1 ⁵ / ₈	2
2 ¹ / ₂ -2 ¹ / ₂	22932	8 ³ / ₈	30	40 ¹ / ₂	3 ¹ / ₂ OD	1 ⁵ / ₈ -1 ⁵ / ₈	2
2 ¹ / ₂ -2 ¹ / ₂	21308†@	10	28	38 ¹ / ₄	3	3-3	0
2 ¹ / ₂ -2 ¹ / ₂	21309†	10	28	38 ¹ / ₂	3	3-3	0
2 ¹ / ₂ -2 ¹ / ₂	21897†	10 ¹ / ₈	40 ¹ / ₄	50	4	2-2	2
2 ³ / ₄ -2 ³ / ₄	22231	8 ¹ / ₄ x 11 ¹ / ₂	27 ³ / ₄	32 ³ / ₄	4	0-3 ³ / ₄	2

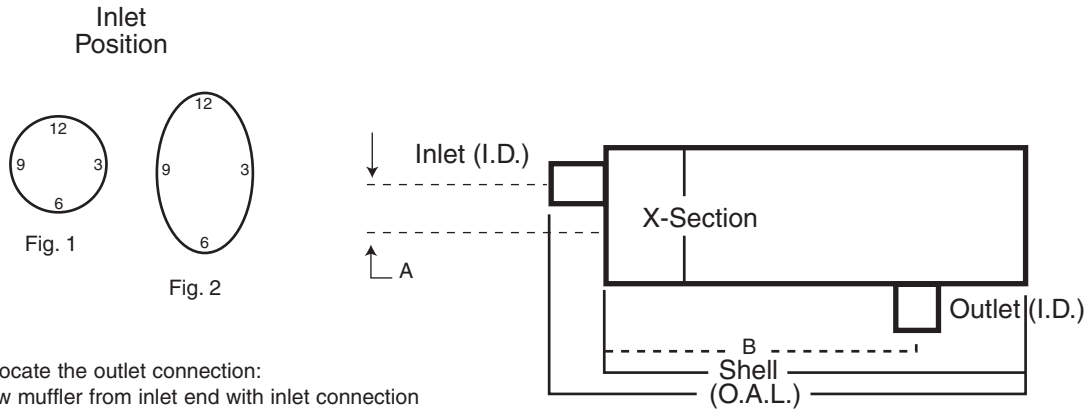
STYLE 6—SINGLE INLET TO DUAL OUTLET



Inlet ID	Part No.	Cross Section	Shell Length	Overall Length	Outlet ID	Inlet Offset	"B" Outlet Offset
2 ¹ / ₄	21095	7	22	27 ¹ / ₂	2-2	1 ³ / ₄	1 ³ / ₄ -1 ³ / ₄
2 ¹ / ₂	22732	4 ¹ / ₈ x 9	19	26	2-2	—	2 ⁷ / ₈ -2 ⁷ / ₈

TABLE 3 — TRUCK MUFFLER SPECIFICATIONS (Cont.)

STYLE 9



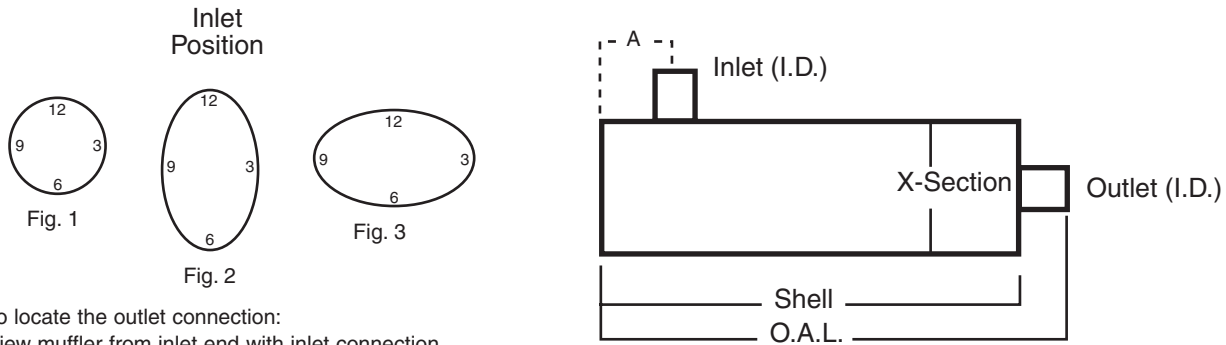
To locate the outlet connection:
View muffler from inlet end with inlet connection near 12 o'clock. Outlet will be located clockwise from inlet per chart.

Inlet ID	Part No.	Cross Section	Shell Length	Overall Length	Outlet ID	"A" Inlet Offset	"B" Outlet Offset	Fig.	Inlet Position	Outlet Position
3 1/2	22391	8 1/4 x 11 1/2	28	31	4 OD	2 1/2	12	2	12	4
3 1/2	22214	8 1/4 x 11 1/2	26	30	4	2 1/2	14 3/4	2	12	10
3 1/2	21074	8 1/4 x 11 1/2	31 1/2	34 3/4	4 OD	2 1/2	7 1/8	2	12	4
3 1/2	21073	8 1/4 x 11 1/2	32	34 3/4	4 OD	2 1/2	21 1/4	2	12	4
3 1/2	22604	8 1/4 x 11 1/2	32	35	4	2 1/2	11 7/8	2	12	10
3 1/2	21168	8 1/4 x 11 1/2	32	35	4 OD	2 1/2	14 5/8	2	12	4
4	21968	10 1/8	27 3/4	31	4	2 1/2	3 1/2	1	12	8
4	21969	10	28	31 1/2	4	2 1/2	20 1/2	1	12	5
4	21139	10	36	38 1/2	4	—	3 9/16	1	12	6
4	22664	11	36	39	4	1 1/2	7 1/2	1	12	6
4	22668	11	36	39	4	2 1/2	3 7/8	1	12	1
4	22669	11	36	38 1/8	4	2 1/2	4 3/8	1	12	10
4	22006	8 1/4 x 11 1/2	28	31	4	2 1/2	12	2	12	8
4	22665	10 x 15	30	33	4	3 3/4	7 1/2	2	12	6
4	22555	10 x 15	36	39	4	3 3/4	7 1/2	2	12	6
4	22919	10 x 15	44 1/8	47 3/4	4	4 1/4	6	2	12	6
4	22994	11	36	38	4	—	12	1	—	—
4 OD	22999	11	36	41	4	2 1/2	18	1	9	6
4 OD	22997	11	36	42	4 WS	—	22 1/2	1	9	6
4 OD	22998	11	36	42	5 OD	—	16	1	9	6
5	22596	9 x 14	18 1/2	22	5	3 7/8	14 1/2	2	12	6
5	22337	10 x 15	35 1/2	38 1/2	5	3 3/4	7 1/2	2	12	6
5	21165	11	36	39	5	2 1/2	7 1/2	1	12	6
5 OD	22950	12	36	40	5 OD	—	21 1/2	1	—	—

INFORMATION & BUILD TO ORDER
TOOLS AND ACCESSORIES
SCHOOL BUS
MEDIUM DUTY TRUCK GVV 3-6
HEAVY DUTY TRUCK GVV 7-8
APPLICATION BY ENGINE
NOISE AND BACKPRESSURE DATA
TRACTOR
MUFFLER SPECS
O.E. CROSS INDEX

TABLE 3 — TRUCK MUFFLER SPECIFICATIONS (Cont.)

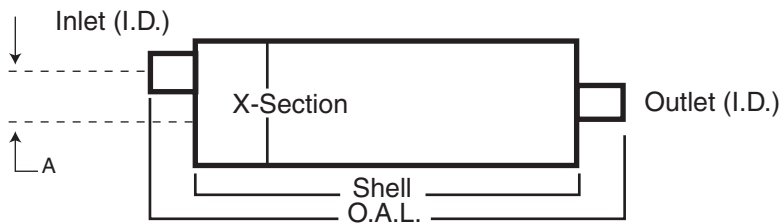
STYLE 10



To locate the outlet connection:
View muffler from inlet end with inlet connection near 12 o'clock. Outlet will be located clockwise from inlet per chart.

Inlet ID	Part No.	Cross Section	Shell Length	Overall Length	Outlet ID	"A" Inlet Offset	Outlet Offset	Fig.	Inlet Position	Outlet Position
1 ⁵ / ₈	22769	4 ¹ / ₄	12 ³ / ₄	15	1 ⁵ / ₈	2 ¹ / ₄	—	1	—	—
2 ¹ / ₂	22770	6 ⁵ / ₈	20 ³ / ₄	23 ¹ / ₂	2 ¹ / ₂	3 ¹ / ₂	1 ⁵ / ₈	1	12	3
3	22767	8 ¹ / ₂	26	29	3	4 ¹ / ₂	2	1	12	3
3 ¹ / ₂	22768	8 ¹ / ₄ x 11 ¹ / ₂	26	29 ¹ / ₂	3 ¹ / ₂	3 ¹ / ₂	2 ¹ / ₂	3	12	9
3 ¹ / ₂	21143	10	35 ⁵ / ₈	39 ³ / ₄	3 ¹ / ₂	4	—	1	12	—
4	22948	9	44 ³ / ₈	48	5	3 ⁹ / ₁₆	—	1	12	—
4	22634	10	28	32 ¹ / ₄	4	4 ¹ / ₂	2 ⁷ / ₁₆	1	12	3
4	22958	11	36	40	4	3 ³ / ₈	2 ³ / ₈	1	12	3
4	22643	11 ¹ / ₈	36	39	4	4 ¹ / ₄	2 ¹ / ₂	1	12	3
4	22570	8 ¹ / ₄ x 11 ¹ / ₂	16 ¹ / ₄	21 ³ / ₄	4	3 ¹ / ₄	2 ¹ / ₂	2	12	6
4	21971	10 x 15	16	19 ¹ / ₂	3 ¹³ / ₁₆ OD	3 ¹ / ₂	4 ³ / ₈	2	12	12
4	21161	10 x 15	21 ¹ / ₈	25 ¹ / ₄	5	10 ³ / ₃₂	4 ¹ / ₄	2	12	12
5	22915	10	44	48	5	6	—	1	12	—
5	22917	10 x 15	36	40	5	6 ¹ / ₈	3 ¹ / ₈	3	12	3
5	21147	10 x 15	16	20 ¹ / ₂	5	13	1 ¹⁷ / ₃₂	2	—	—

STYLE 11 — OFFSET TO CENTER



Inlet ID	Part No.	Cross Section	Shell Length	Overall Length	Outlet ID	"A" Inlet Offset
2 ¹ / ₄	21102	4 ¹ / ₈ x 9	16	27 ¹ / ₂	2 ¹ / ₄	2.88
2 ¹ / ₂	21099	4 ¹ / ₈ x 9	25	30	2 ¹ / ₄	2.88
3	21312†@	9	24 ¹ / ₂	33 ³ / ₄	3	2
3	21313†	9	24 ¹ / ₂	33 ³ / ₄	3	2

TABLE 3 — TRUCK MUFFLER SPECIFICATIONS (Cont.)

STYLE 13

Inlet Position

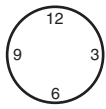


Fig. 1

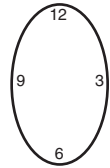


Fig. 2

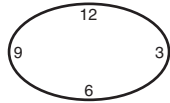
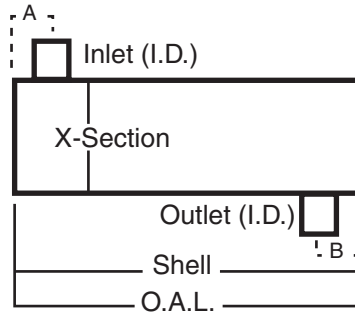


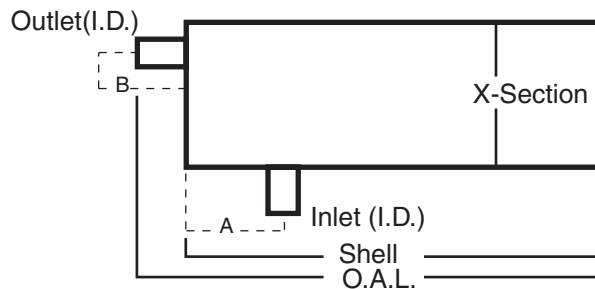
Fig. 3



To locate the outlet connection:
View muffler from inlet end with inlet connection near 12 o'clock. Outlet will be located clockwise from inlet per chart.

Inlet ID	Part No.	Cross Section	Shell Length	Overall Length	Outlet ID	"A" Inlet Offset	"B" Inlet Offset	Fig.	Inlet Position	Outlet Position
4	22775	10 ¹ / ₈	28	28	4	4 ¹ / ₂	9	1	12	6
4	22642	11 ¹ / ₈	36	36	4	4 ¹ / ₄	6 ³ / ₄	1	12	9
4	21069	11 ¹ / ₈	36	36	4	4 ¹ / ₄	22 ¹ / ₂	1	12	2
5	22452	10 x 15	26	26	5	4	4	3	12	6
5	21167	10 x 15	30	32	5	3 ¹ / ₂	4	2	12	6

STYLE 23



Inlet ID	Part No.	Cross Section	Shell Length	Overall Length	Outlet ID	"A" Inlet Offset	"B" Outlet Offset
4	21071	8 ¹ / ₄ x 11 ¹ / ₂	28 ¹ / ₂	31	4	5 ¹ / ₄	2 ¹ / ₂
5	21070	10 x 15	27	29 ³ / ₄	5	4 ⁵ / ₈	3 ⁵ / ₈
5	21084	12 ¹ / ₄ x 15	27	29 ³ / ₄	5	4 ¹ / ₂	3 ⁵ / ₈

† Double-Wrapped.

‡ Threaded.

@ Stainless.

SP Spout.

★ Mega Flow Muffler.

Noise Braker Muffler.

INFORMATION & BUILD TO ORDER
TOOLS AND ACCESSORIES
SCHOOL BUS
MEDIUM DUTY TRUCK GVV 3-6
HEAVY DUTY TRUCK GVV 7-8
APPLICATION BY ENGINE
NOISE AND BACKPRESSURE DATA
TRACTOR
MUFFLER SPECS
O.E. CROSS INDEX