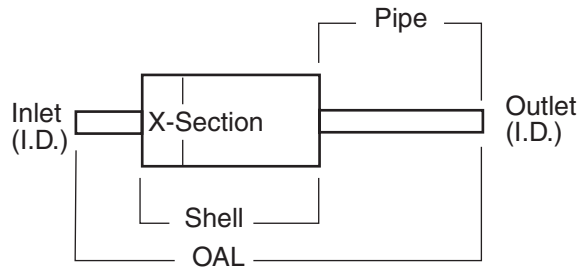


TRACTOR MUFFLER SPECIFICATIONS

STYLE 1 — CENTER TO CENTER



Part No.	Cross Section	Inlet ID	Outlet ID	Shell Length	Overall Length	Pipe Length
22861‡	5.62	3.50	3.60 OD	28	42.2	11.2
22028	3.25	1.50 OD	1.50 OD	19.75	32.56	12.81
22027‡	6.62	2.88	2.60 OD	21	27.38	3.38
22033	5.62	2.93	3.04 OD	21.2	32.5	9.6
22035‡	3.25	1.90	1.35 OD	15	17.88	1.5
22038	4.25	2.25	2.25	13	17	2
22043	3.25	1.75 OD	1.75 OD	19.5	31.25	11.75
22042‡	3.25	1.75 OD	1.75 OD	15.5	31.5	15
21060	5.62	2.38	2.50 OD	17.7	32	12.5
22047	3.25	2.00	1.75	15	17.2	1.1
22046	3.25	1.63	1.50	15	17.6	1.3
21035	3.25	1.50	1.50	24	34.25	8.25
22438	4.62	1.88	1.88	17.5	22.5	2.5
22444	5.62	1.88	2.00 OD	17	28.7	7.2
21040	3.25	1.33	1.33	9.6	22.2	10.1
21033	4.25	2.25	2.25	22.5	26.75	2.25
21188‡	4.25	2.00	2.13 OD	12.7	17.1	2.4
21041	4.5	2.40	2.40	10.88	21	4
21473*	4.62	2.50	2.63 OD	14.5	27.6	5.1
21039	4.62	1.94	1.94	15.56	28.38	10.63
22037	4.62	2.75	2.50 OD	16.5	26	4.75
22023	4.25	1.88	1.50	12.63	17.94	2.38
22110	4.25	1.63	1.63	17.63	22.5	2.44
22109*	4.25	2.13	1.88 OD	15.25	21	2
22018‡	3.25	1.90 OD	1.50	13.5	20.38	4
21036*	3.75	2.50	2.31	19.88	20.94	0.8
22041‡	4.62 x 8.38	3.88#	3.63 OD	33	38	4.2
22890*	4.12 x 9.00	2.38	2.50 OD	26	49	19.2
22904‡	6.12 x 10.12	3.00	3.25 OD	32	48	12
22922*	4.12 x 9.00	1.86	2.00 OD	25.98	40.75	4.5
22923*	4.12 x 9.00	1.86	2.00 OD	18	48.62	24.72
45248	3.24	1.625§	1.625 OD	24	54.5	9

‡ Low Carbon Steel.

* Black Topcoat.

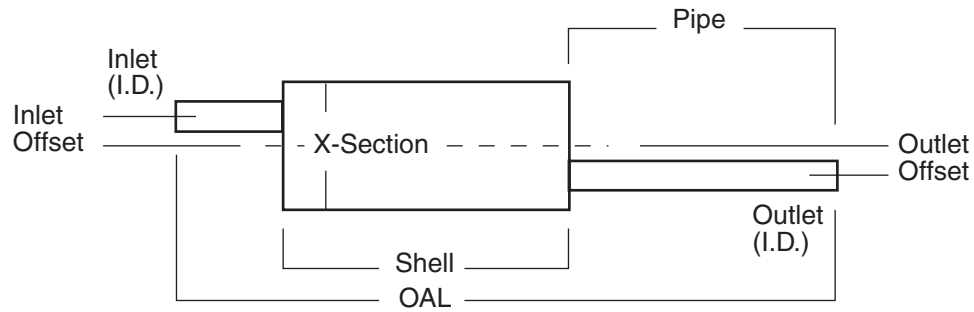
83° Flare x 4.31 OD.

§ 83° Flare x 2.00 OD.

❖ 83° Flare x 3.09 OD.

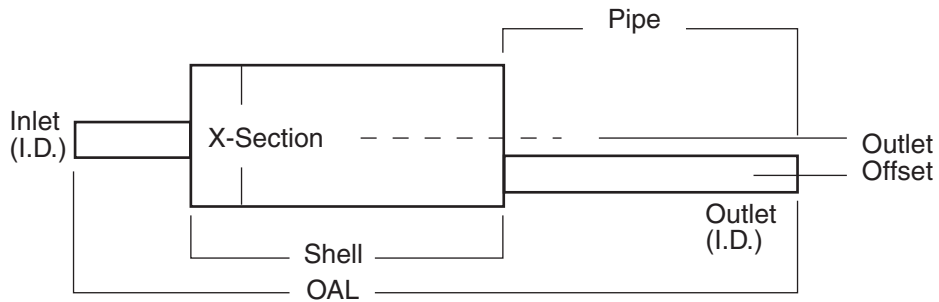
TRACTOR MUFFLER SPECIFICATIONS (Cont.)

STYLE 2 — OFFSET TO OFFSET



Part No.	Cross Section	Inlet ID	Inlet Offset	Outlet ID	Outlet Offset	Shell Length	Overall Length	Pipe Length
22040*	4.62 x 8.38	2.45‡	2.25	1.88 OD	0.5	19	30.5	8.4

STYLE 3 — CENTER TO OFFSET



Part No.	Cross Section	Inlet ID	Outlet ID	Outlet Offset	Shell Length	Overall Length	Pipe Length
22390	4.62 x 8.38	2.50	1.84 OD	2.5	19	33.5	9

‡ Low Carbon Steel.

* Black Topcoat.

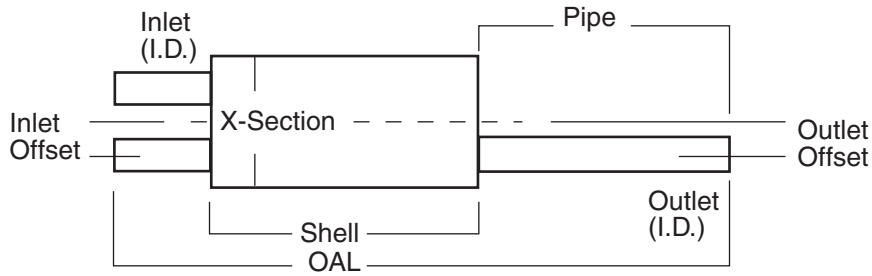
83° Flare x 4.31 OD.

§ 83° Flare x 2.00 OD.

◆ 83° Flare x 3.09 OD.

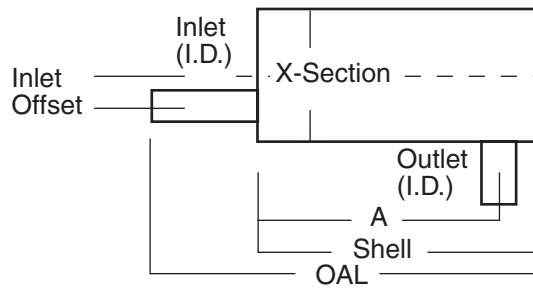
TRACTOR MUFFLER SPECIFICATIONS (Cont.)

STYLE 5 — DUAL INLET TO SINGLE OUTLET



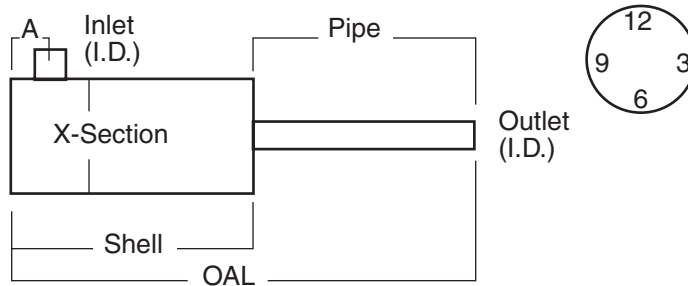
Part No.	Cross Section	Inlet ID	Inlet Offset	Outlet ID	Outlet Offset	Shell Length	Overall Length	Pipe Length
22822	8.38	2.50	1.62 1.62	3.00	2	36.5	43	3.25

STYLE 9 — SIDE OUTLET



Part No.	Cross Section	Inlet ID	Inlet Offset	Outlet ID	"A"Outlet Offset	Shell Length	Overall Length
22024	3.25	1.90	N.A.	1.36 OD	15.75	17.38	18.5

STYLE 10 — SIDE INLET



Part No.	Cross Section	Inlet ID	Outlet ID	Outlet Offset	Outlet Position	"A"Outlet Offset	Shell Length	Overall Length	Pipe Length
22658*	5.62	2.00	2.12 OD	N.A.	N.A.	2	22.5	26	3.5
22032	4.25	2.50	2.12 OD	N.A.	N.A.	4	14.75	19.5	4
22021	5.62	3.13	2.75 OD	N.A.	N.A.	3.3	19.5	22.5	3
22022‡	3.25	1.32	1.38 OD	N.A.	N.A.	1.37	11	15.75	4.75

‡ Low Carbon Steel.

* Black Topcoat.

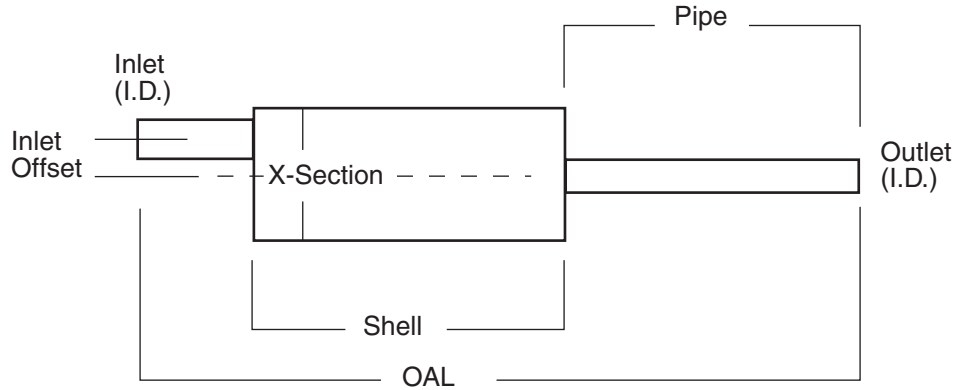
83° Flare x 4.31 OD.

§ 83° Flare x 2.00 OD.

❖ 83° Flare x 3.09 OD.

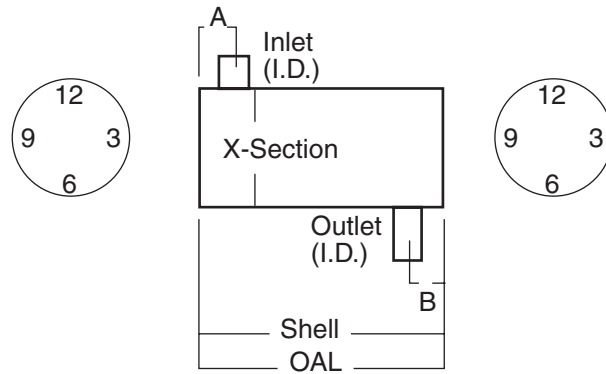
TRACTOR MUFFLER SPECIFICATIONS (Cont.)

STYLE 11 — OFFSET TO CENTER



Part No.	Cross Section	Inlet ID	inlet Offset	Outlet ID	Shell Length	Overall Length	Pipe Length
22039*	6.62	—	1.56	1.80 OD	5.1	10.4	3.1

STYLE 13 — SIDE INLET/SIDE OUTLET



Part No.	Cross Section	Inlet ID	"A" Inlet Offset	Outlet ID	"B" Outlet Offset	Outlet Position	Shell Length	Overall Length
22020*	5	1.42	1.5	1.38 OD	2.9	6	12.5	12.5

‡ Low Carbon Steel.

* Black Topcoat.

83° Flare x 4.31 OD.

§ 83° Flare x 2.00 OD.

◆ 83° Flare x 3.09 OD.

INFORMATION & BUILD TO ORDER

TOOLS AND ACCESSORIES

SCHOOL BUS

MEDIUM DUTY TRUCK GVV 3-6

HEAVY DUTY TRUCK GVV 7-8

APPLICATION BY ENGINE

NOISE AND BACKPRESSURE DATA

TRACTOR

MUFFLER SPECS

O.E. CROSS INDEX