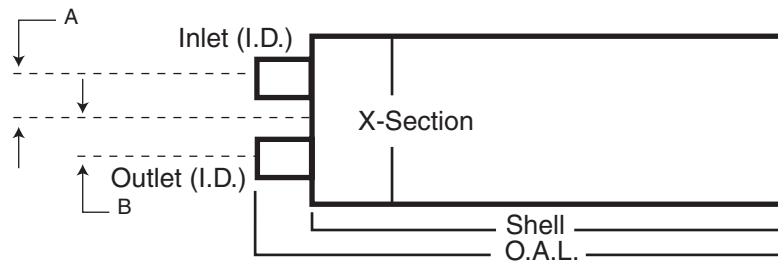


## STYLE 4 — INLET/OUTLET SAME END



Inlet ID	Part No.	Cross Section	Shell Length	Overall Length	Outlet ID	"A" Inlet Offset	"B" Outlet Offset
3	22637	8 <sup>3</sup> / <sub>8</sub>	22	23 <sup>1</sup> / <sub>2</sub>	3	2	2
3 <sup>1</sup> / <sub>8</sub>	21089	11 <sup>1</sup> / <sub>8</sub>	27 <sup>1</sup> / <sub>2</sub>	30	3 <sup>1</sup> / <sub>8</sub>	3	3
3 <sup>1</sup> / <sub>2</sub>	21086	11 <sup>1</sup> / <sub>8</sub>	30	36	3 <sup>1</sup> / <sub>2</sub>	2 <sup>3</sup> / <sub>4</sub>	2 <sup>3</sup> / <sub>4</sub>
3 <sup>1</sup> / <sub>2</sub>	21300	8 <sup>1</sup> / <sub>4</sub> x 11 <sup>1</sup> / <sub>2</sub>	32	34 <sup>3</sup> / <sub>4</sub>	4	2 <sup>1</sup> / <sub>2</sub>	2 <sup>1</sup> / <sub>2</sub>
3 <sup>1</sup> / <sub>2</sub>	21072	8 <sup>1</sup> / <sub>4</sub> x 11 <sup>1</sup> / <sub>2</sub>	32	38 <sup>1</sup> / <sub>2</sub>	SP	2 <sup>1</sup> / <sub>2</sub>	2 <sup>1</sup> / <sub>2</sub>
4	21137	10	27 <sup>3</sup> / <sub>4</sub>	32	4	2 <sup>7</sup> / <sub>16</sub>	2 <sup>7</sup> / <sub>16</sub>
4	21837	10	27	30 <sup>1</sup> / <sub>2</sub>	4	2 <sup>7</sup> / <sub>16</sub>	2 <sup>7</sup> / <sub>16</sub>
4	21923	10 x 15	26	29 <sup>1</sup> / <sub>4</sub>	4	3 <sup>3</sup> / <sub>4</sub>	3 <sup>3</sup> / <sub>4</sub>
4	21175	10 x 15	36	39 <sup>1</sup> / <sub>2</sub>	4	1 <sup>1</sup> / <sub>4</sub>	4 <sup>1</sup> / <sub>2</sub>
5	22381	10 x 15	25	29	5	3	3
5	22971	10 x 15	44	47	5	3 <sup>9</sup> / <sub>16</sub>	3 <sup>9</sup> / <sub>16</sub>

SP Spout.